



Demographic Trends in Clear Creek and Gilpin Counties

Clear Creek EDC

Greg Totten, Feb 8, 2024

State Demography Office, Department of Local Affairs

Demography.dola.colorado.gov



COLORADO

Department of Local Affairs

Big Picture Numbers

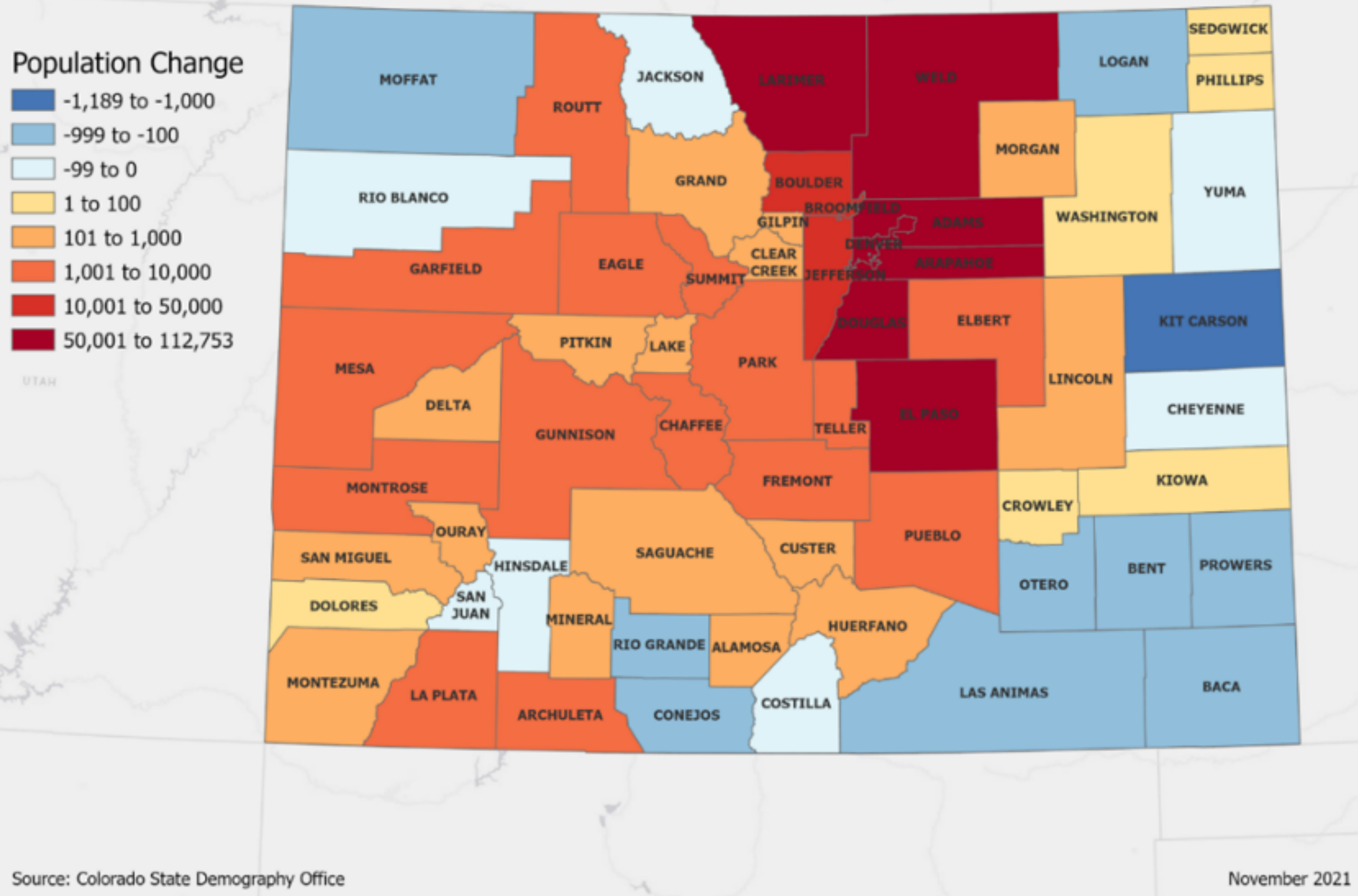
Growth is Slowing

	2010-2020		2020-2021		2021-2022	
United States	22.3MM	7.4%	520k	0.1%	1.256MM	0.4%
Colorado	744.5k	14.8%	26.5k	0.5%	27.7k	0.5%
Colorado Rank	9th	6th	11th	20th	12th	19th

- 2010 - 2020
 - Second slowest decade for US in terms of growth
- 2020 - 2021
 - Slowest year for US growth rate;
 - 17 states lost population
- 2021 - 2022
 - 19 states lost population



Total Population Change 2010 - 2020

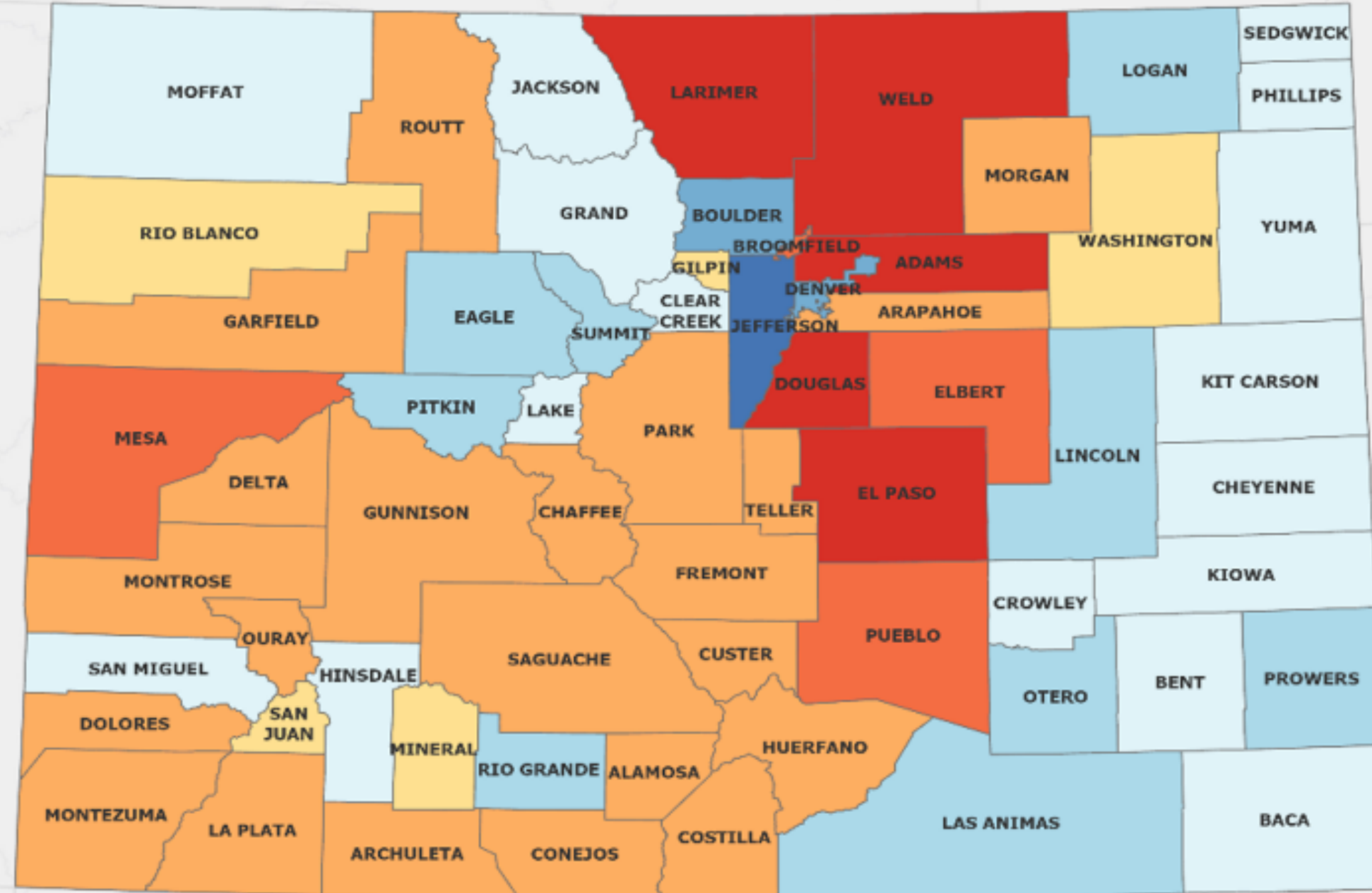


Total Population Change

2020 - 2022

Population Change

- 7,127 to -5,000
- 4,999 to -1,000
- 999 to -100
- 99 to 0
- 1 to 100
- 101 to 1,000
- 1,001 to 5,000
- 5,001 to 18,783



Source: Colorado State Demography Office

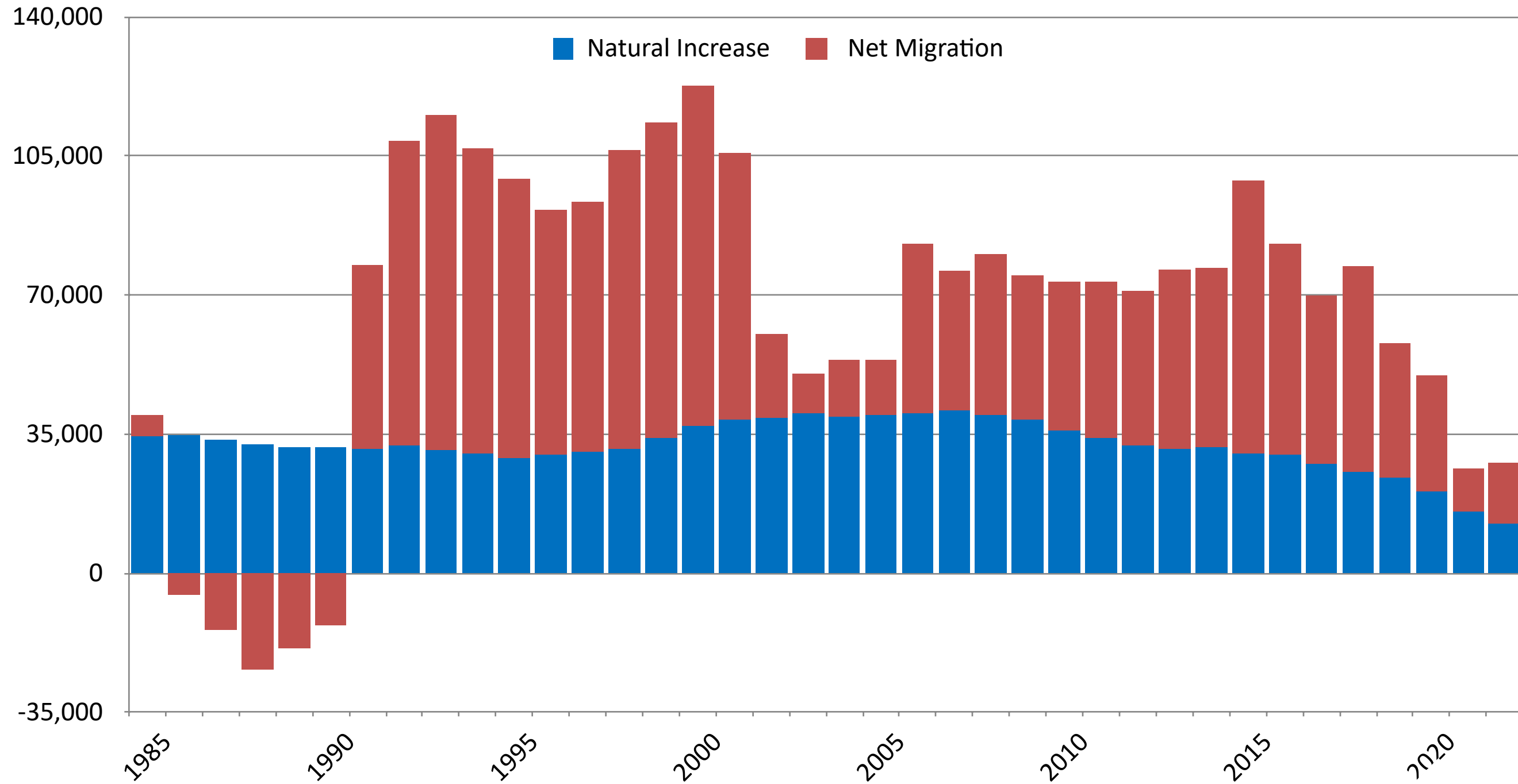
April 2023



COLORADO
Department of Local Affairs

Source: 2020 and 2022 Colorado State Demography Office
Population Estimates v2022

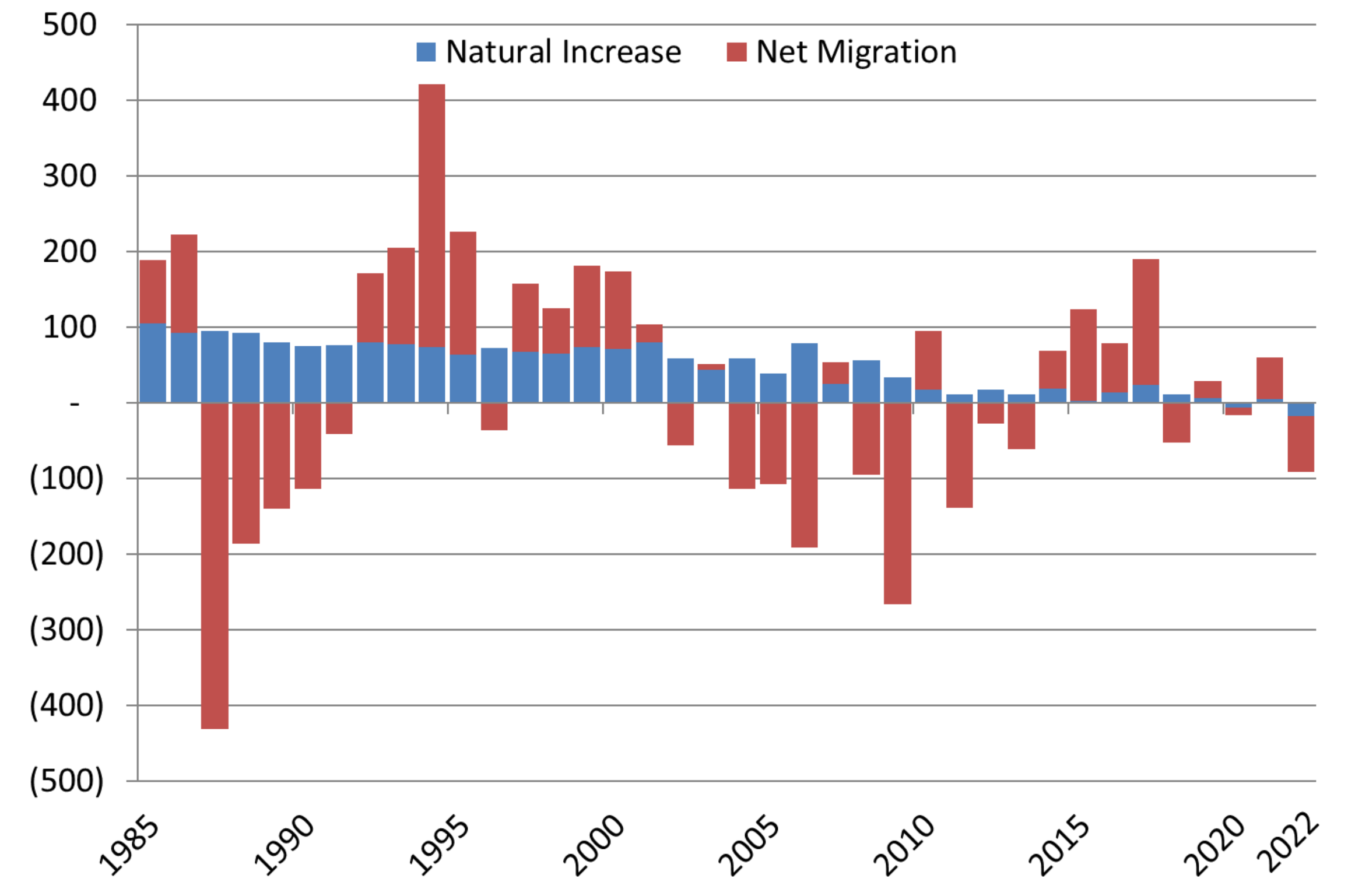
Components of Colorado Population Change 1985-2022



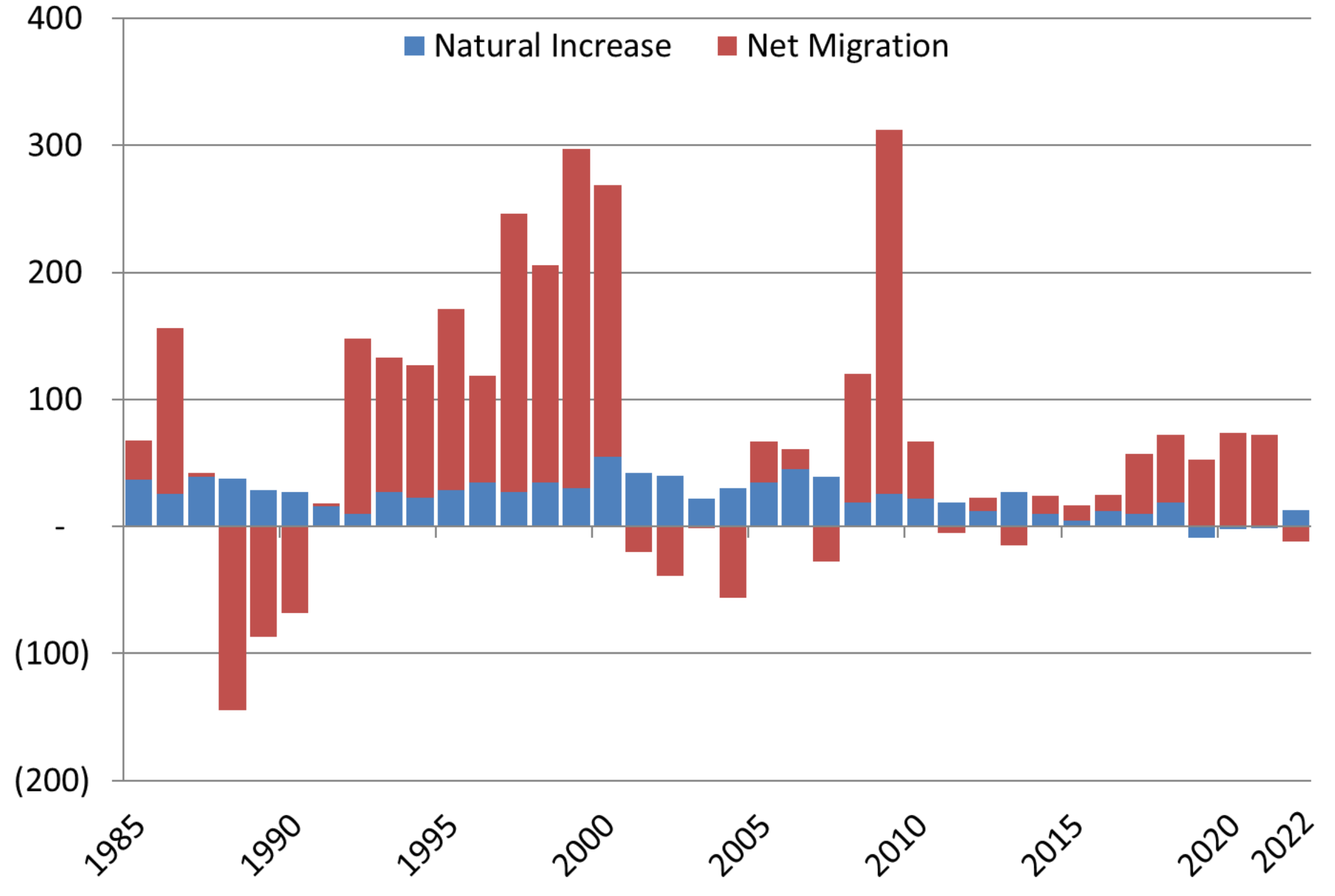
	Natural Increase	Net Migration	Population Change	Percentage
2010-2020	286,158	448,094	734,252	14.5%
Ann Avg	28,616	44,809	73,425	1.4%
2020-2022	28,042	26,110	54,152	0.9%
Ann Avg	14,021	13,055	27,076	0.5%



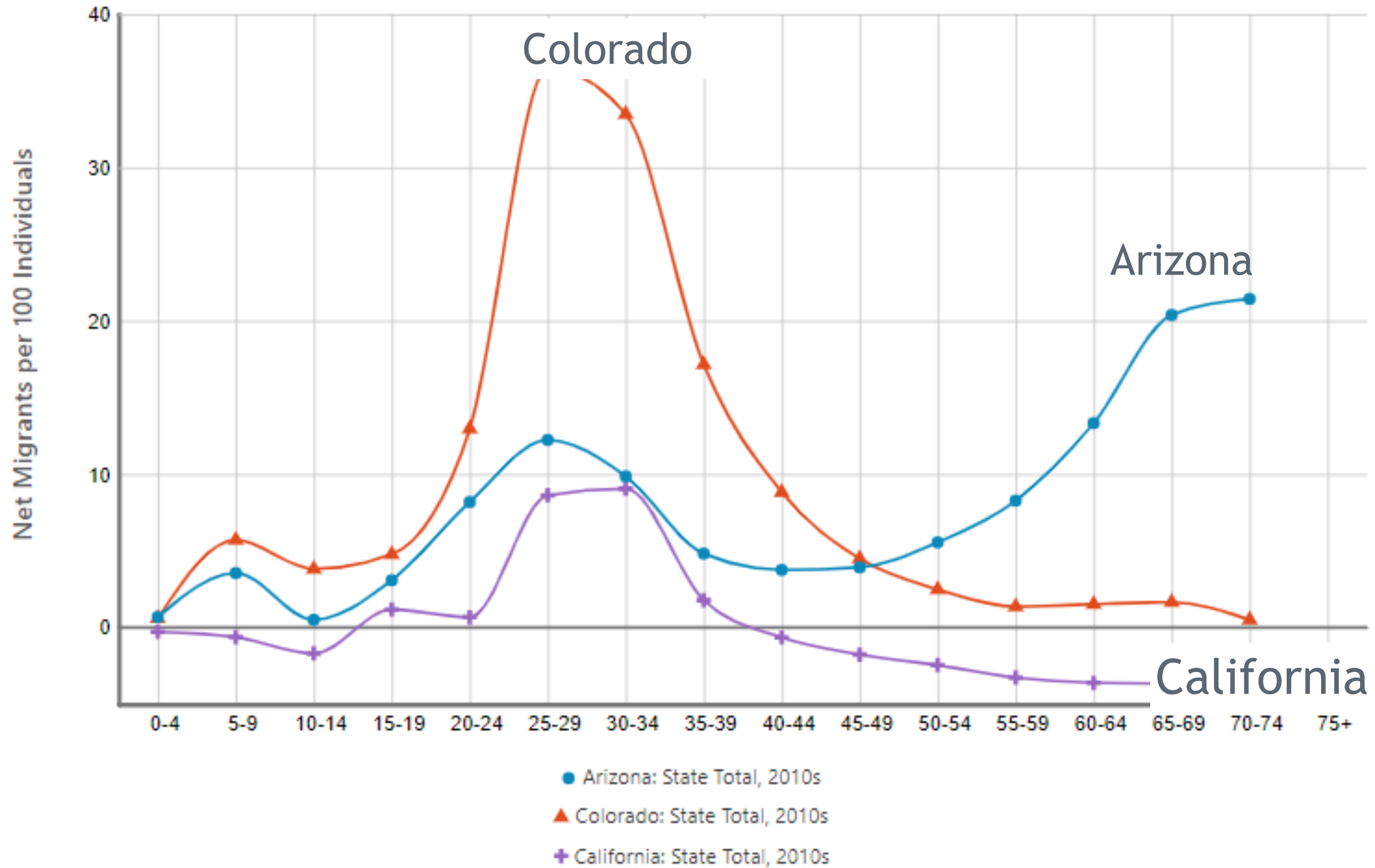
Components of Clear Creek Population Change, 1985-2022



Components of Gilpin Population Change, 1985-2022



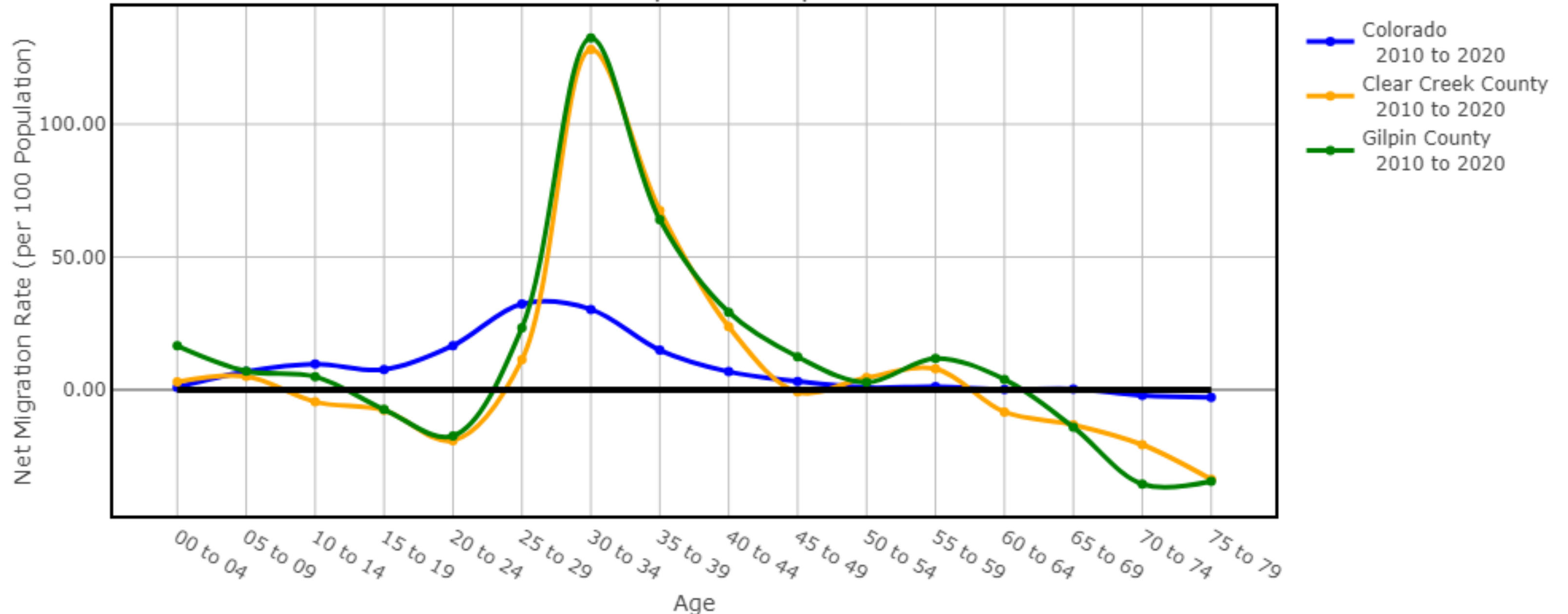
Net Migration by Age



Egan-Robertson, David, Katherine J. Curtis, Richelle L. Winkler, Kenneth M. Johnson, and Caitlin Bourbeau, *Age-Specific Net Migration Estimates for US Counties, 1950-2020*. Applied Population Laboratory, University of Wisconsin - Madison, 2023 (Beta Release). Web.



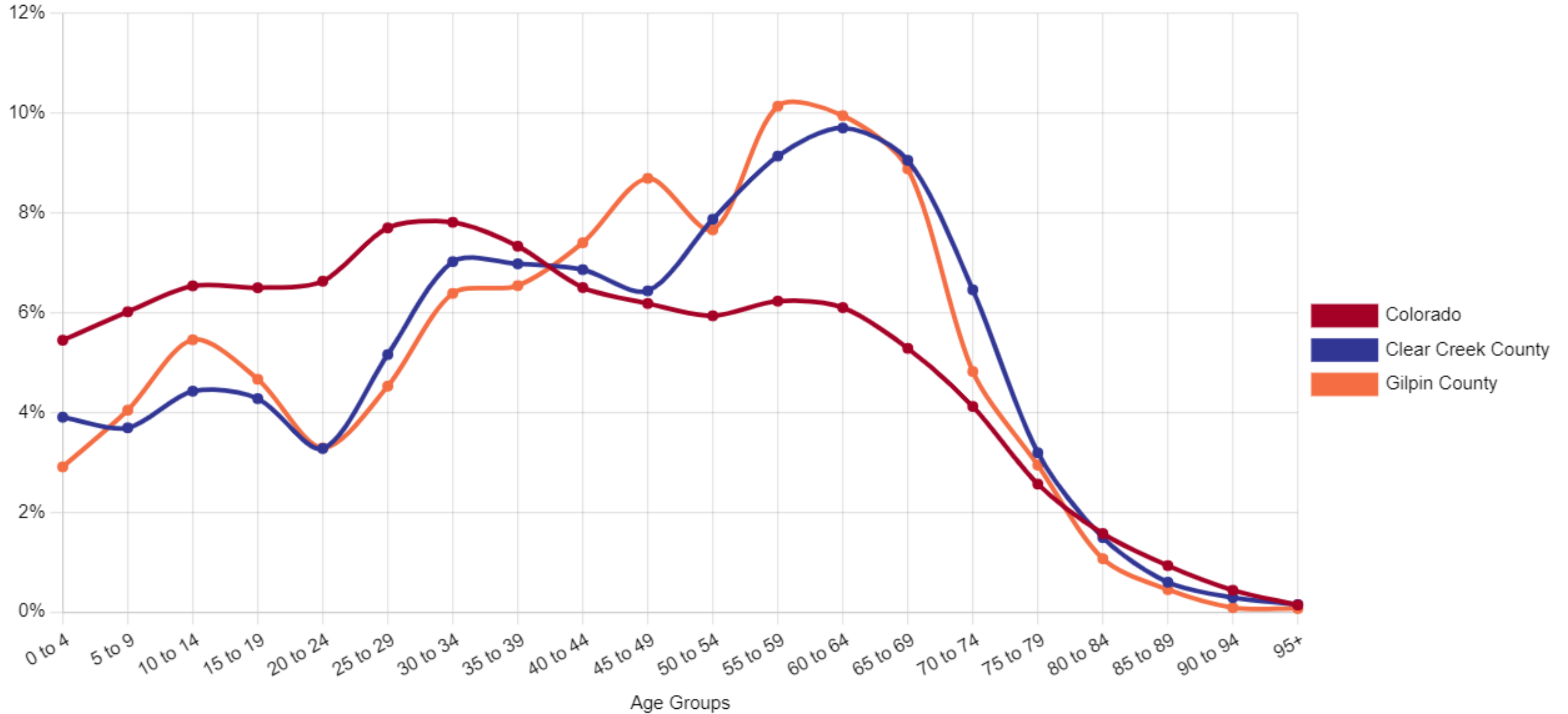
Net Migration by Age -- Net Migration Rate 2010 to 2020 per 100 Population



Data and Visualization by the Colorado State Demography Office. Print Date: February 08, 2024



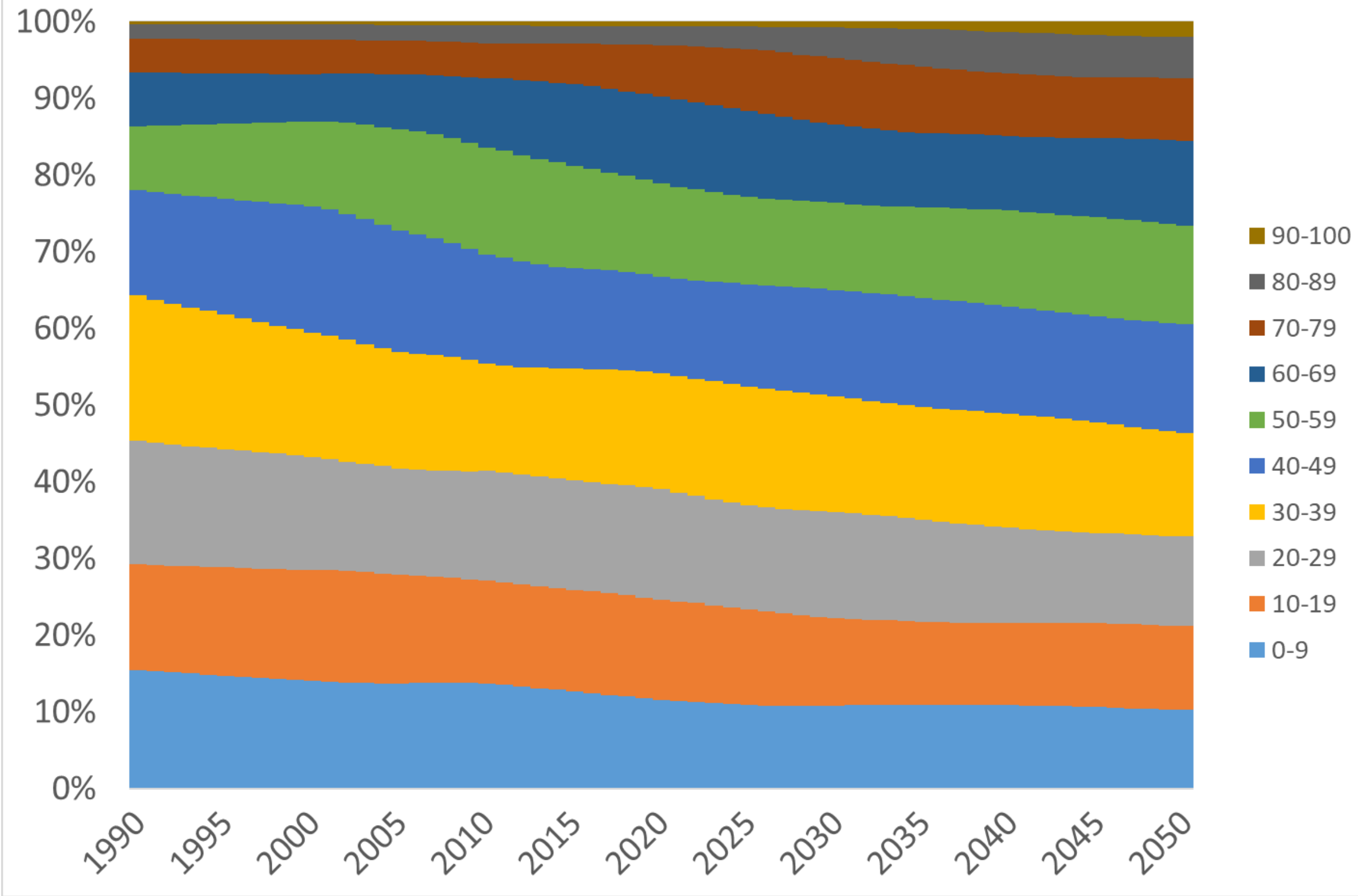
Age Comparison



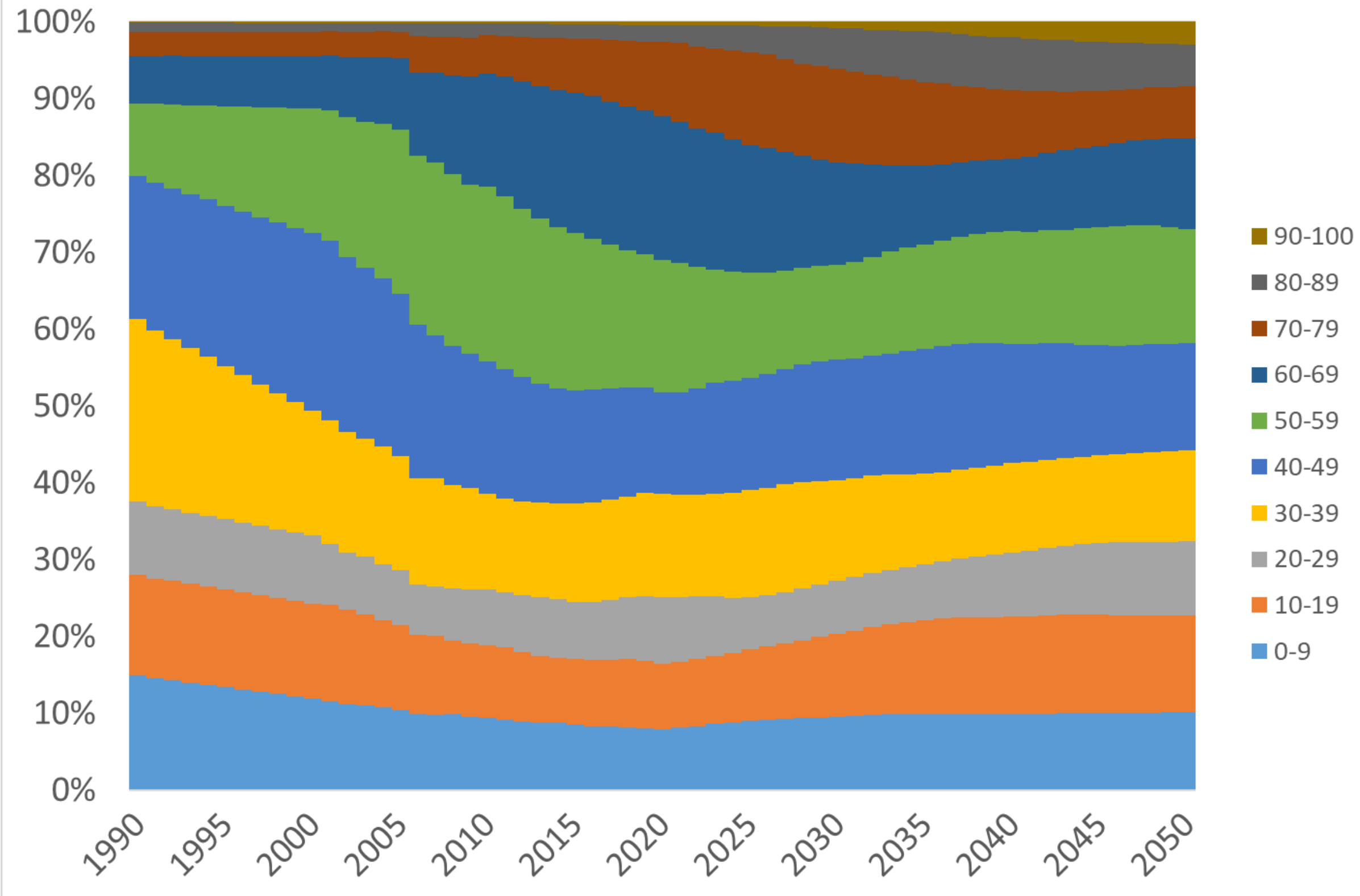
Source: US Census Bureau 2020 DHC, Visualization by Colorado State Demography Office. Print date: February 08, 2024



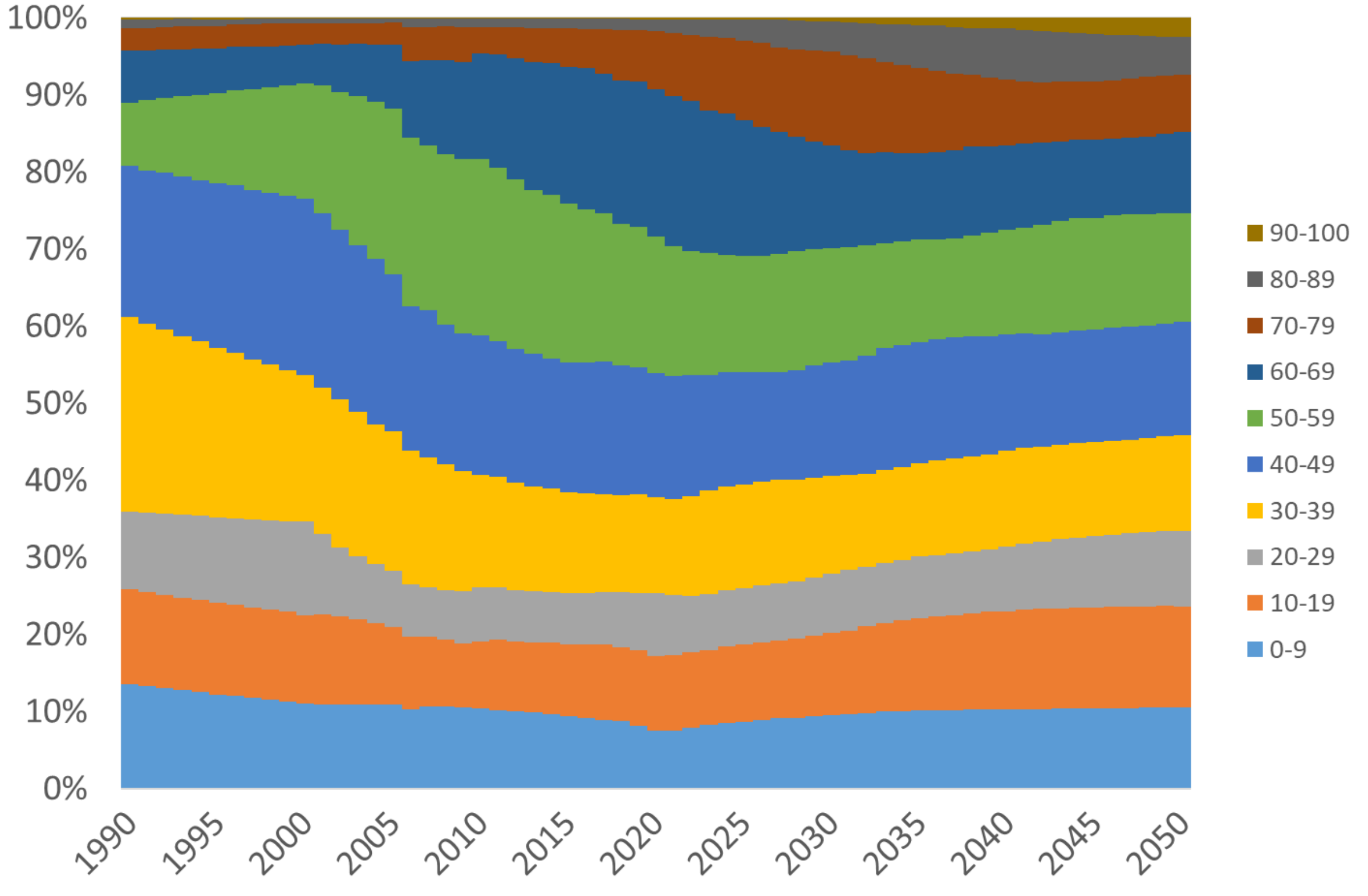
Age Distribution by Year, Colorado



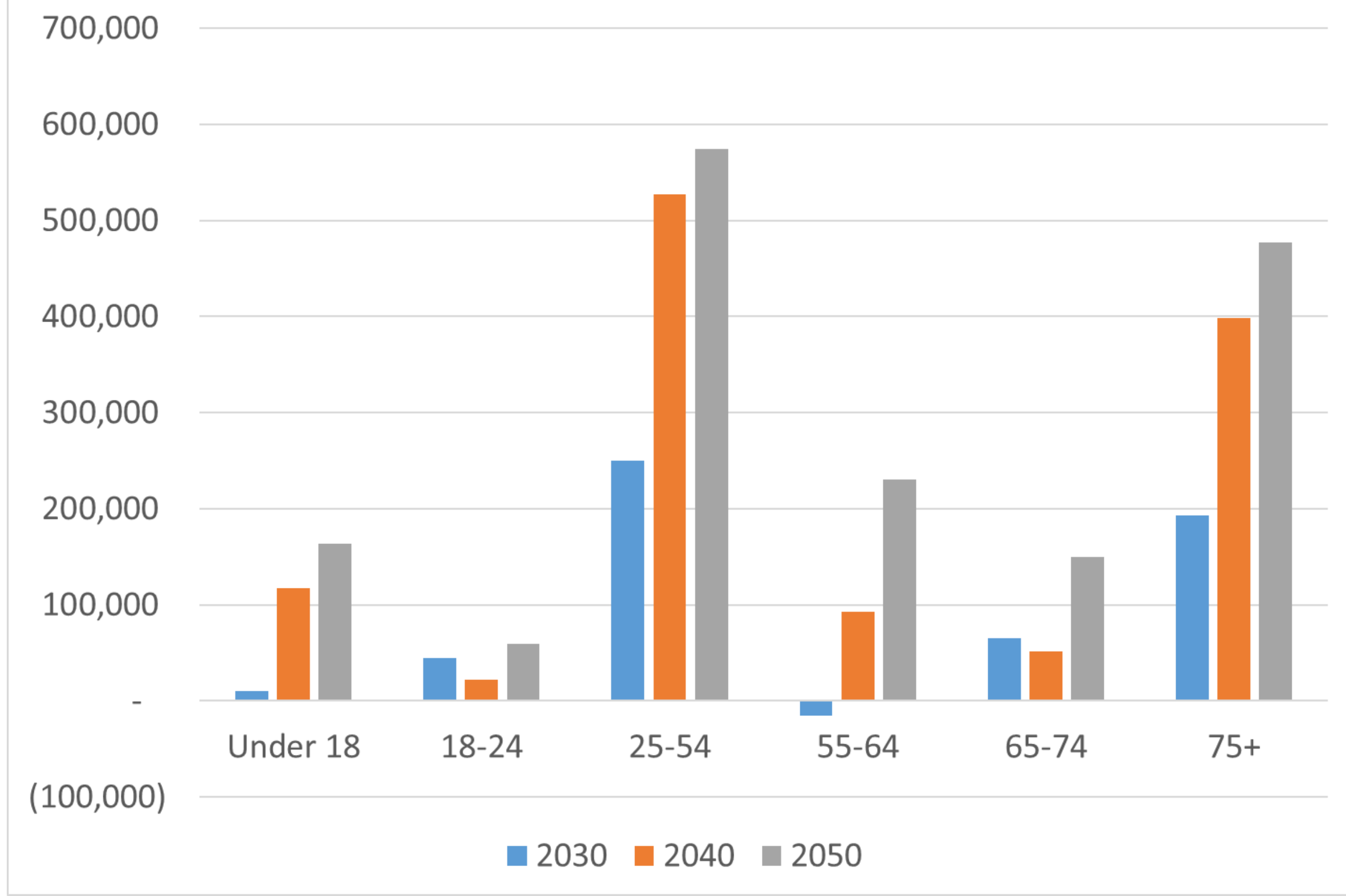
Age Distribution by Year, Clear Creek



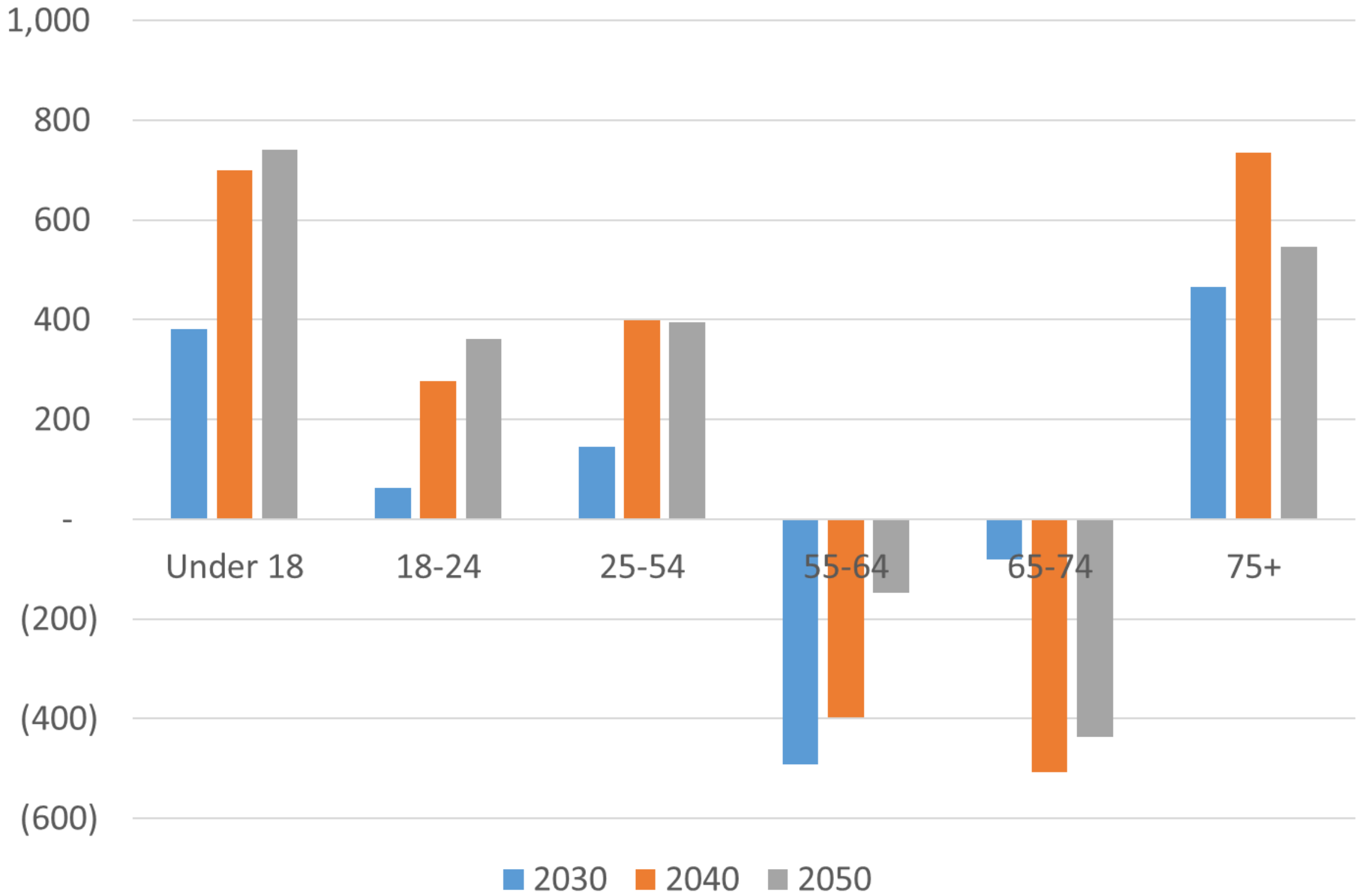
Age Distribution by Year, Gilpin



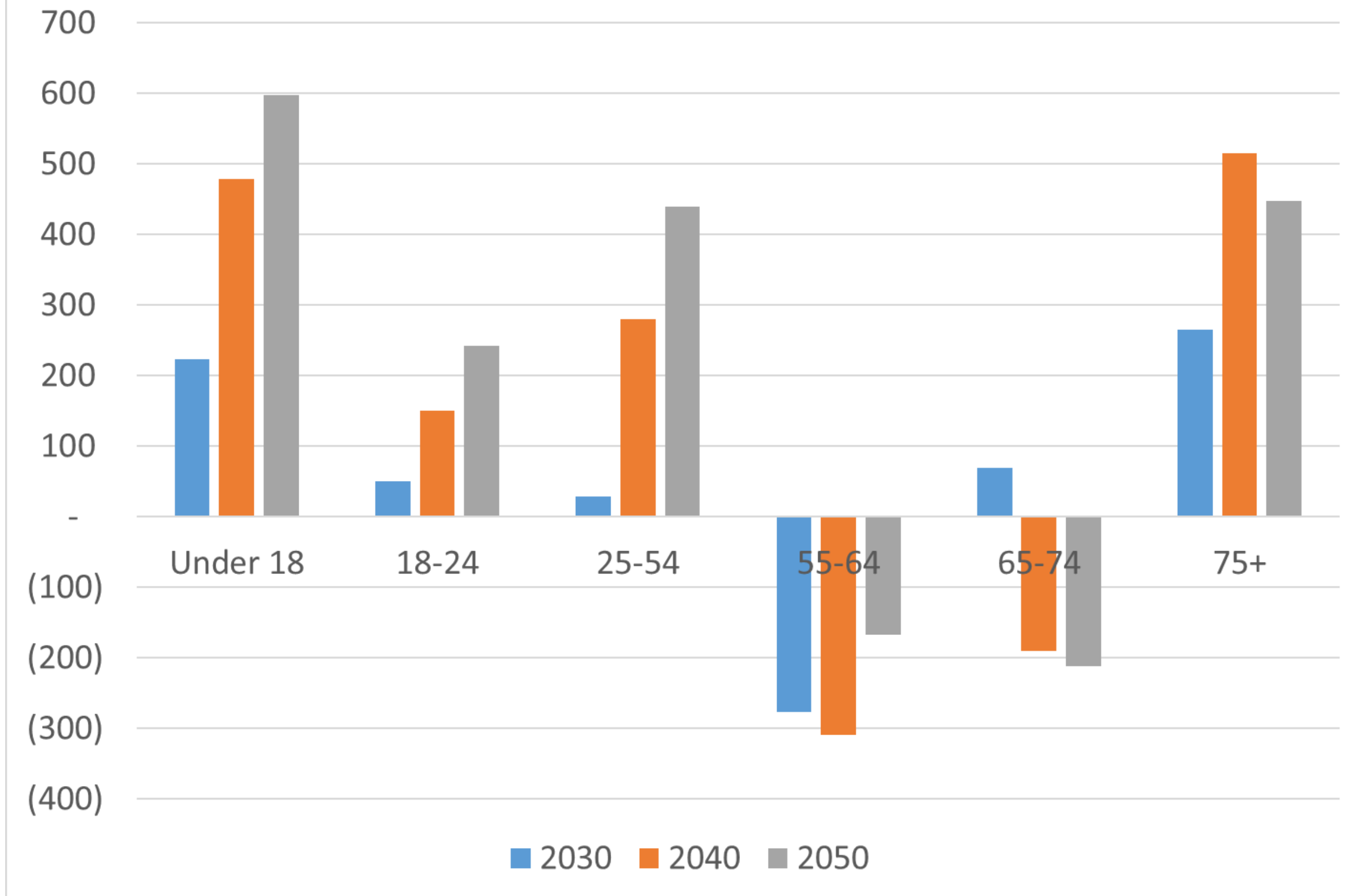
Projected Change in Population from 2022, Colorado



Projected Change in Population from 2022, Clear Creek



Projected Change in Population from 2022, Gilpin



Age Matters

- Preferences - where people shop and what they buy.

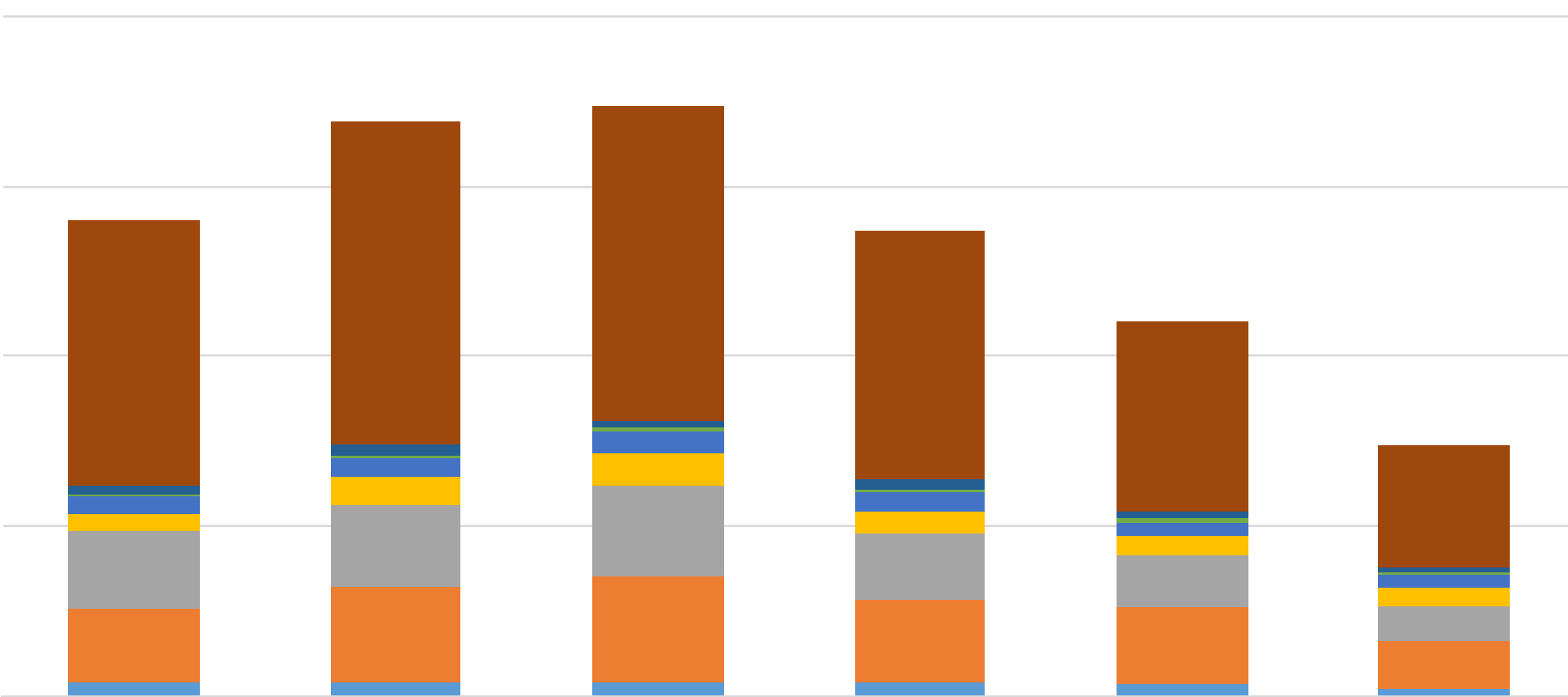
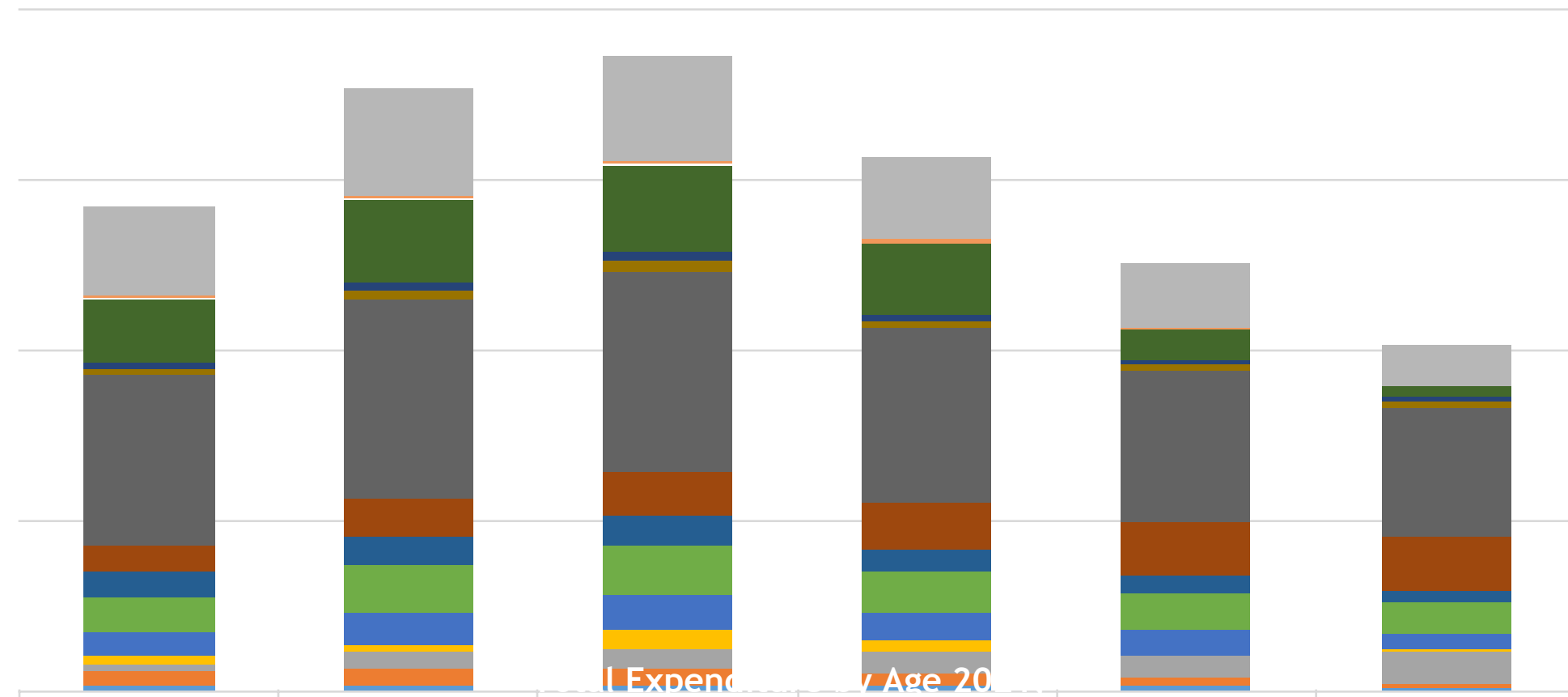
Service Demands

Income

- Labor Force

Housing - type, size, mobility



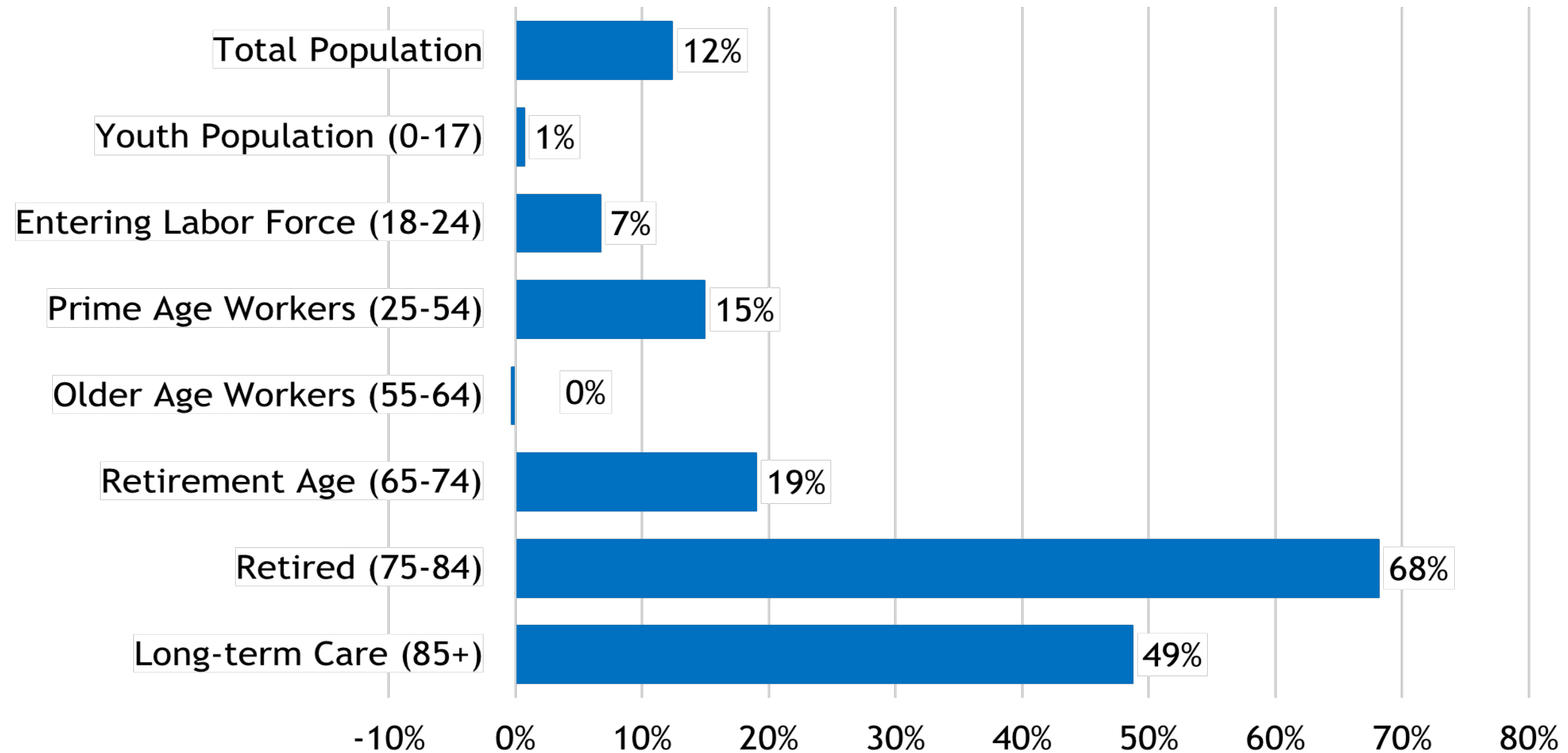


Statewide labor force trends

- Labor force participation among Colorado older adults has been rising over time and higher than the U.S.
- Employed adults ages 65 & over increased 600% between 2000 and 2022, from 30,000 to over 180,000
- Over the next 5 years expecting 40,000 retirements per year, assuming increased participation for everyone ages 55+
- Growth in young adults entering the labor force is expected to slow due to declining births



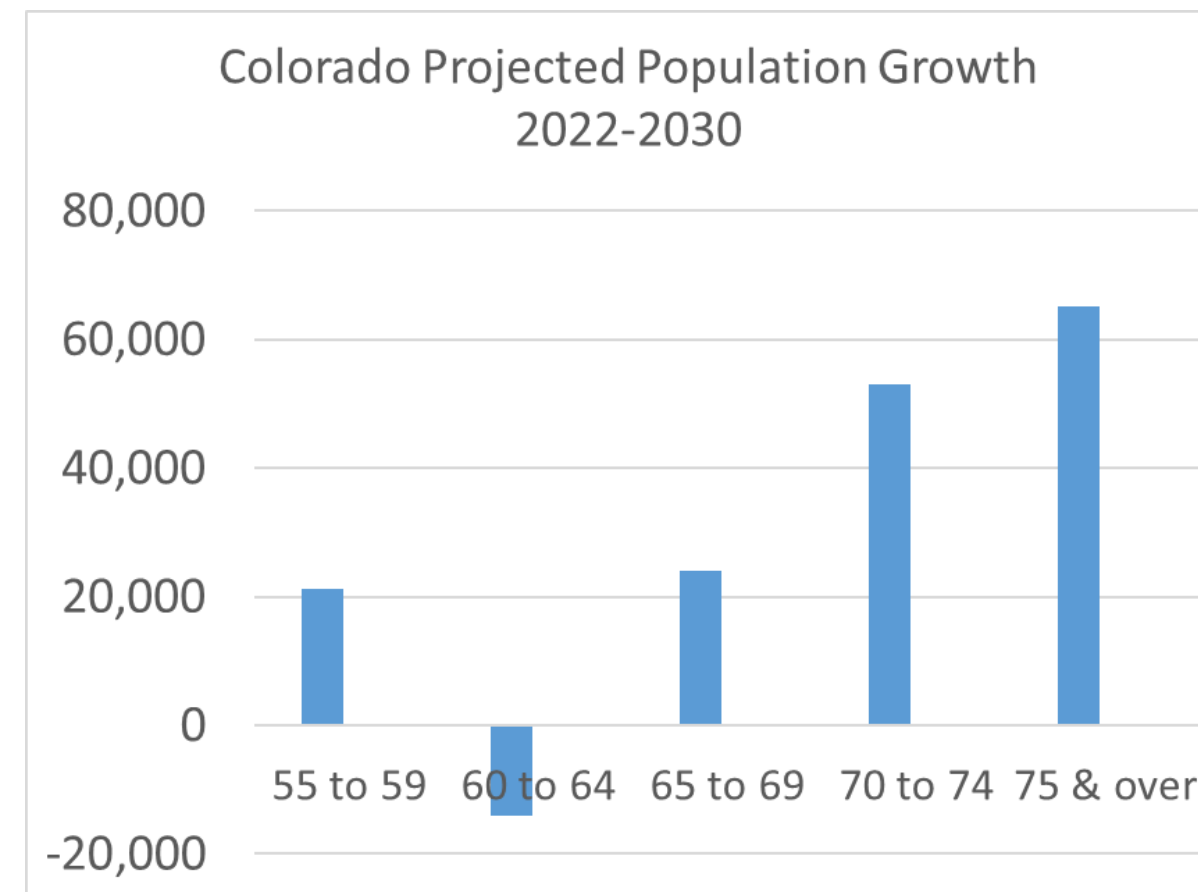
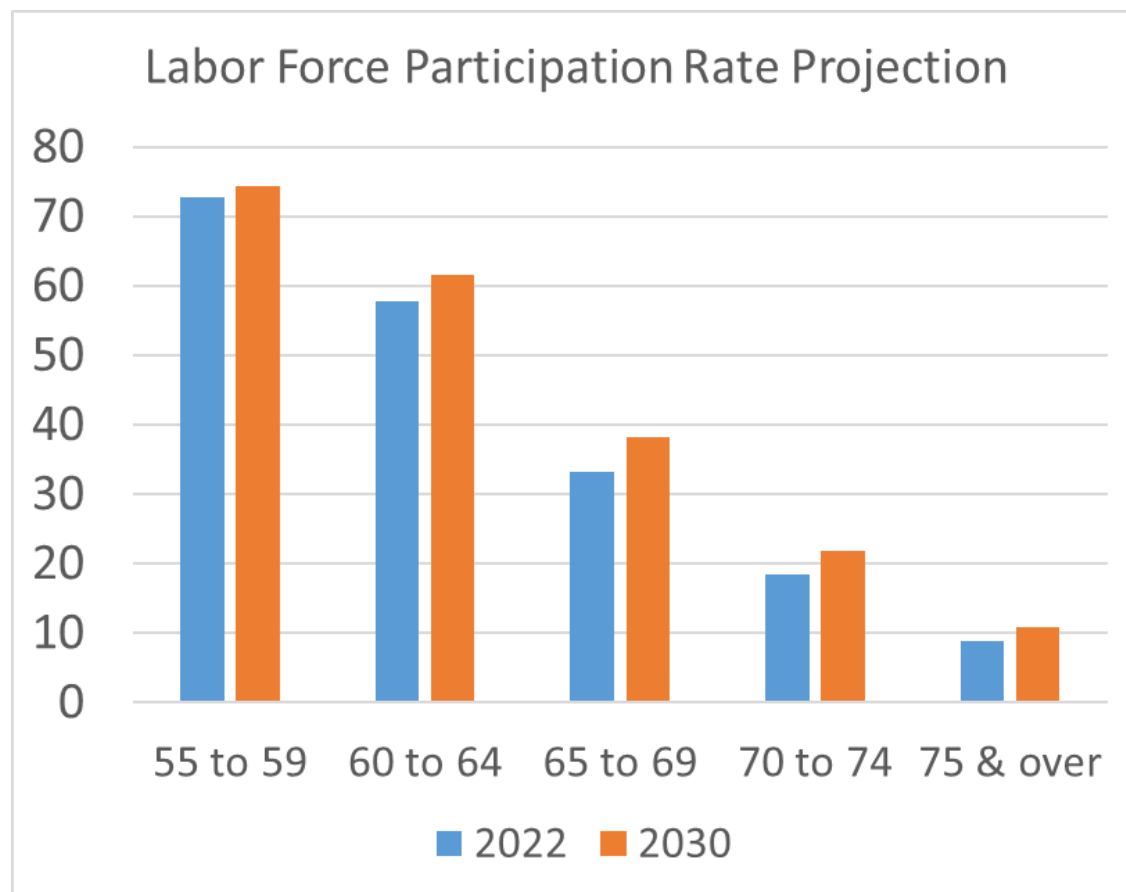
Colorado Population Change, 2020-2030



Labor Force Participation by Age

Bureau of Labor Statistics

Labor Force participation of persons ages 55+ projected to decline in aggregate



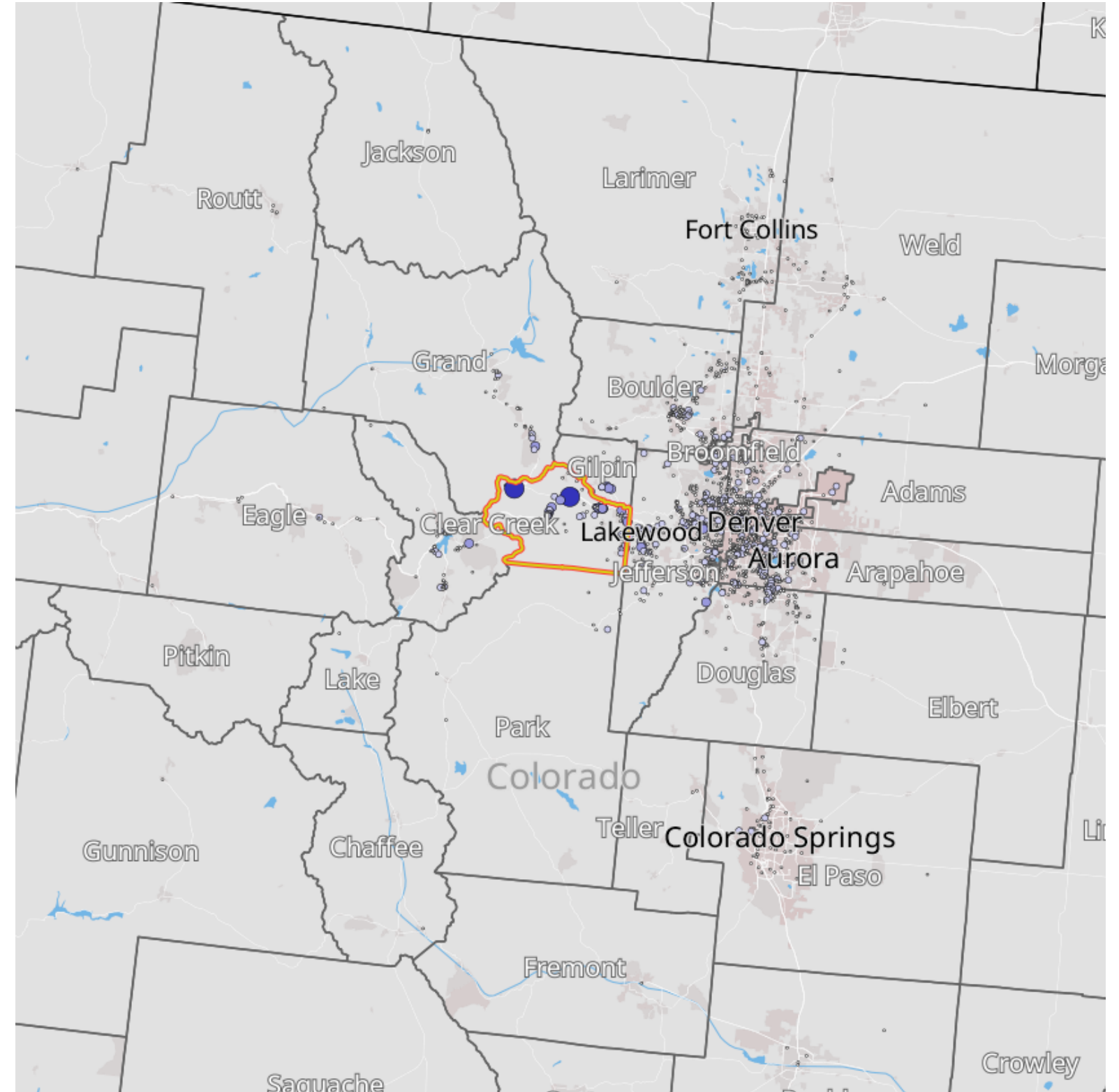
Commuting - Clear Creek

Inflow/Outflow Job Counts in 2021



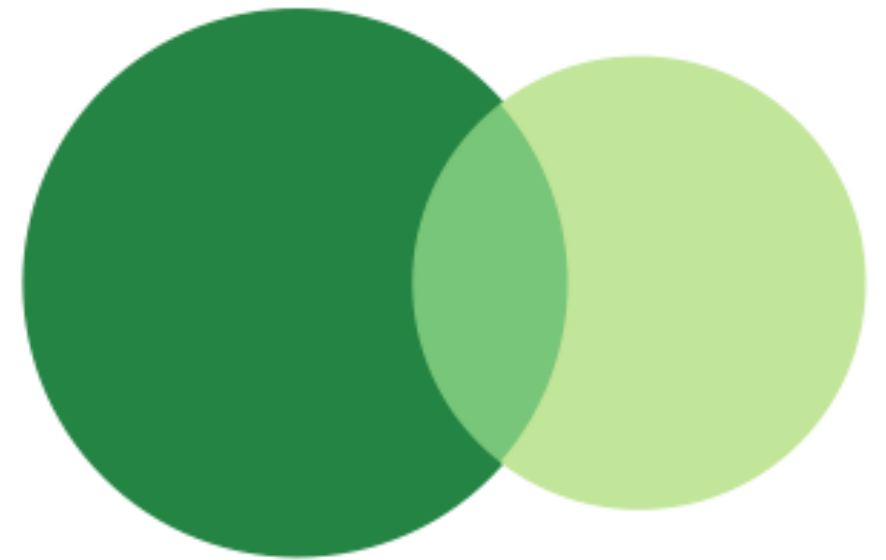
Jobs by Distance - Home Census Block to Work Census Block

		2021	
		Count	Share
Total Private Primary Jobs		3,518	100.0%
	Less than 10 miles	771	21.9%
	10 to 24 miles	978	27.8%
	25 to 50 miles	1,472	41.8%
	Greater than 50 miles	297	8.4%



Commuting - Gilpin

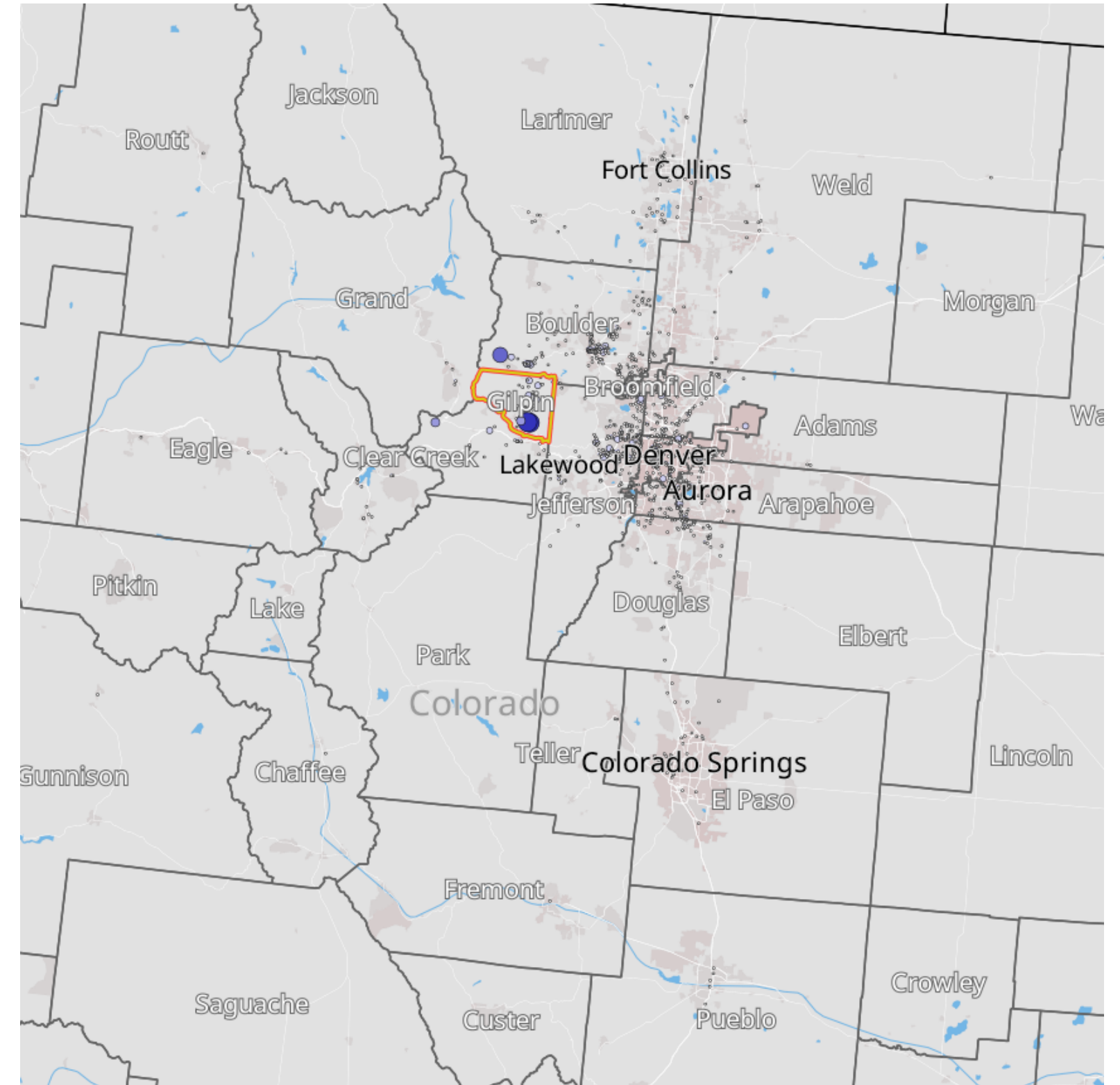
Inflow/Outflow Job Counts in 2021



- 2,731 - Employed in Selection Area, Live Outside
- 1,687 - Live in Selection Area, Employed Outside
- 538 - Employed and Live in Selection Area

Jobs by Distance - Home Census Block to Work Census Block

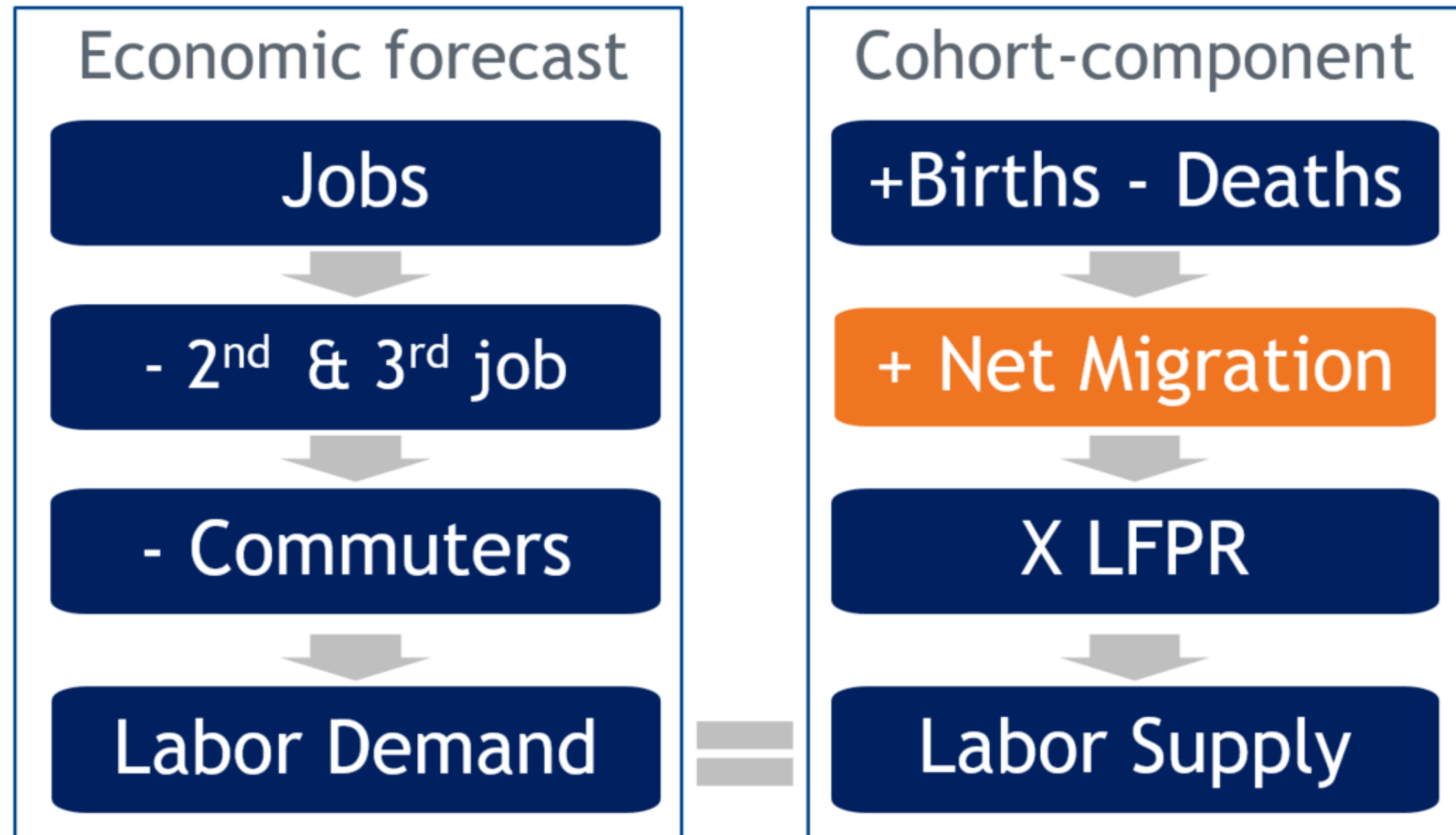
	2021	
	Count	Share
Total Private Primary Jobs	2,225	100.0%
 Less than 10 miles	669	30.1%
 10 to 24 miles	712	32.0%
 25 to 50 miles	695	31.2%
 Greater than 50 miles	149	6.7%



Forecast



Colorado population forecast methodology



Differences resolved by net migration

5.7 to 7.5 Million

Change 2020-2050

State: 1.7 million

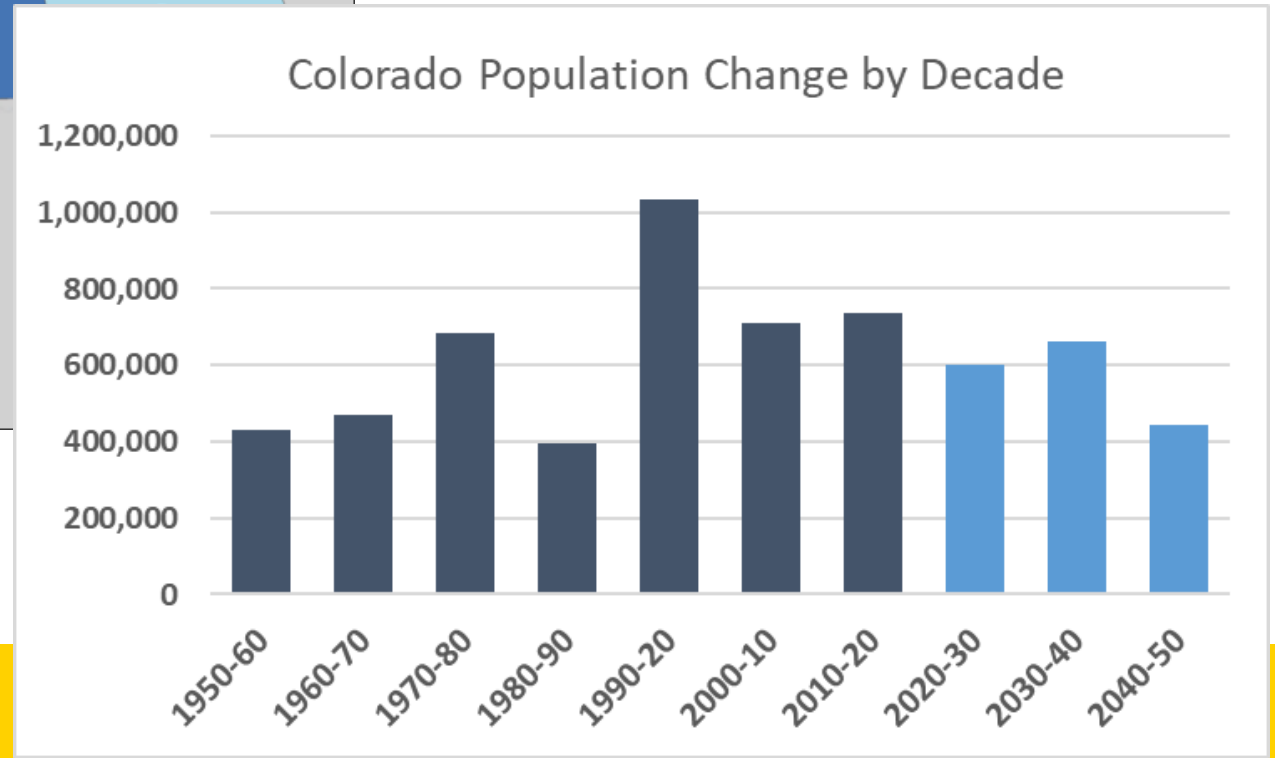
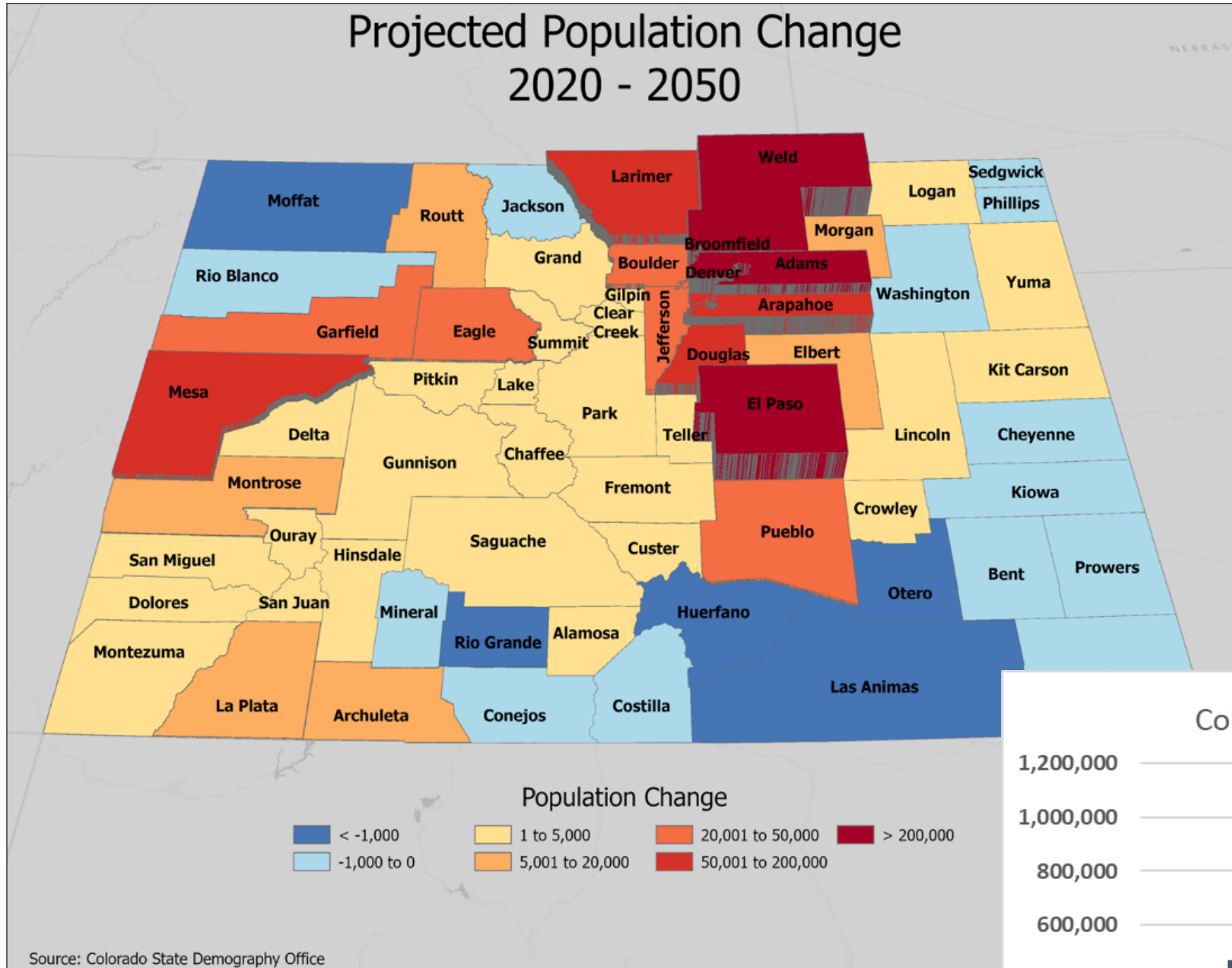
Front Range: 1.49M

Western Slope: 200K

Central Mtns: 4K

San Luis Valley: -2K

Eastern Plains: 11K





Thank you

State Demography Office
Department of Local Affairs

Greg Totten

greg.totten@state.co.us

303-864-7751

Demography.dola.colorado.gov



COLORADO
Department of Local Affairs